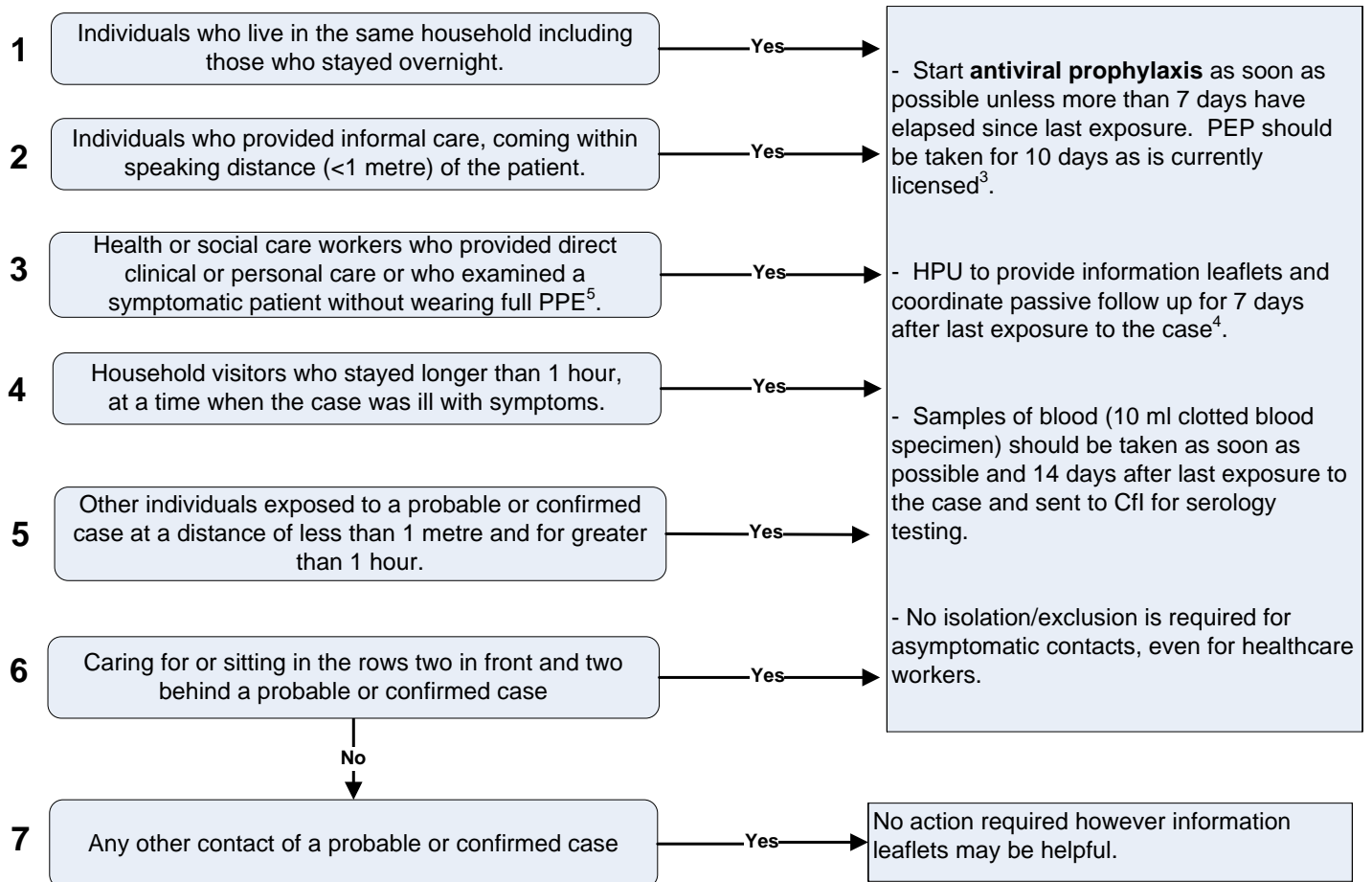


WHO PANDEMIC ALERT PHASE 4: Post exposure prophylaxis for close contacts of probable¹ or confirmed² human case(s) of swine influenza A/H1N1

PEP for close contacts of probable and confirmed cases is a control measure to be applied before there is a wide spread sustained transmission within the UK. Therefore this policy may be modified if the situation intensifies.

Post exposure prophylaxis is indicated for close contacts who were exposed to a probable or confirmed case during the period when the latter was symptomatic AND last exposure occurred no more than 7 days ago. Any probable or confirmed human case of swine influenza A/H1N1 should be notified to the local Health Protection Unit (HPU) as soon as possible.



If a contact becomes unwell, the patient should be investigated and treated and the local HPU should liaise with the Centre for Infections.

Footnotes:

1. Probable case: Any person meeting the clinical and epidemiological criteria AND with a positive test for influenza A (see Algorithm S4).
2. Confirmed case: Any person with laboratory confirmation of swine influenza A/H1N1.
3. Refer to dosing schedule for antiviral prophylaxis. (<http://www.bnf.org/bnf/bnf/current/119743.htm>)
4. Passive follow up: provision of information to individual (or responsible carer) and request that any febrile respiratory or other unexplained illness within 7 days of last contact be reported (24 hour reporting).
5. Full PPE: high filtration mask (FFP3), gown, gloves and eye protection

In case of uncertainty, discuss with local Health Protection Unit.